

DC Motorized Potentiometers

The MC and ME Series perform best at low (5-20ma) currents. Choose from 6, 12 or 24 VDC and 1, 3, 5, 10, 18, 35, 61, or 120 RPMs with other RPMs available. (RPM's are +/- 20%). Two Six (6") inch lead wires are attached to the motor — one red and one black.

- Potentiometers – single or 10 turn; wirewound or conductive plastic; single, dual or triple gang.
- Resistances values are 10, 20, 50, 100, 200, 500 ohms, 1K, 2K, 5K, 10K, 20K, 50K, and 100K depending on model.
- Diagrams available by email. Length can vary +/- .5 inch depending on motor and geartrain used to get the correct RPMs.
- Length can vary +/- .5 inch depending on motor and geartrain used to get the correct RPM's.

Type of Potentiometer	Watt	Resistance	Description	Model	Dimensions
Single turn wirewound	0.5	10 ohm to 20K	General purpose with gold plated terminals for solderless assembly with AMP model 110 S connectors on pot. Pot life expectancy 500,000 turns.	MC2E MC2ED (Dual gang)	1 3/8" Dia x 3.76"L Dual 4.25"L
Single turn Conductive plastic	1	50 ohm to 20K Standard	General Purpose with gold plated terminals. Pot life expectancy 10 million turns.	MC2P MC2PD (Dual gang)	1 3/8" Dia x 3.76"L 5.5"L
3 turn hybrid	1	1K to 100K	Longer rotational life. Pot life expectancy 10 million turns.	MC5146B	7/8"Dia x 4 3/4" L
10 turn wirewound	2	100 ohm to 100K	General Purpose - in housing. Long life, two million turns. High reliability, space saving design.	MC20-1	7/8" Dia x 4 3/4" L
10 turn wirewound	2	100 ohm to 100K	Same high quality as MC20-1 in rugged, open-frame cage.	MC20A	1 1/4"Dia x 4 3/4" L
10 turn wirewound	2	1K/1K, 2K/2K, 5K/5K, 10K/10K	Dual gang for feedback systems. Same potentiometer as MC20A. One pot section for control, the other supplies position to your system.	MC20-2	1 1/4"Dia x 5 3/4" L
10 turn wirewound	2	100 ohm to 100K	For industrial applications. Pot life expectancy 1 million turns.	MC2W	1 3/8"Dia x 4" L
10 turn wirewound	2	5K/5K/5K normal. Others available.	Triple gang potentiometer for feedback.	MC5022	1 1/4"Dia x 7" L
10 turn wirewound	2	100 ohm to 100K	One piece Japanese motor geartrain used. 24 VDC, 20 RPM normal.	ME2W	1 1/4"Dia x 6" L
10 turn wirewound	5	100 ohm to 100K Normal 1K	Approximately 2" diameter. Potentiometer has ball bearings, CCW end resistance 0.25 ohm max., 5" dead spot at CCW end.	MC5168	2" Square x 6 3/4" L

Other Models still available. Please Contact Us to check any MC numbers.



MC20-1



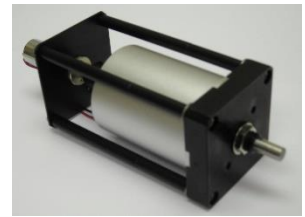
MC20A



MC2P



MC20-2



MC5168

SERVICE:

Our service department will also try and repair older (OEM) ETI motorized potentiometers (MC, MAC, ME series) built in the 80's and 90's. Motorized Potentiometers built by On Line Controls, Inc. can be returned for repair or rebuilding. Delivery will depend upon available parts. The clutch on your new motorpot has been factory set. Any adjustments may make the unit inoperable and void the warranty.

Dials available:

Available for Motorized Potentiometers – dial to be attached by customer.

- DB10 Square digital – counts up to 10 turns, Height 1-3/4", Width 1"
- MF46 Large Round – counts up to 20 turns, 100 dial gradations, diameter 1 13/16"
- MF25 Medium Round – counts up to 10 turns, diameter 1"
- MF22 Small Round – counts up to 20 turns, diameter 7/8"

